



ChinaStudies / Feng Shui Designs, Inc.
P.O. Box 399
Nevada City, CA 95959
530-470-9215 phone/fax

CLIENT REPORT

Date: 08-18-05

Client:

Address:

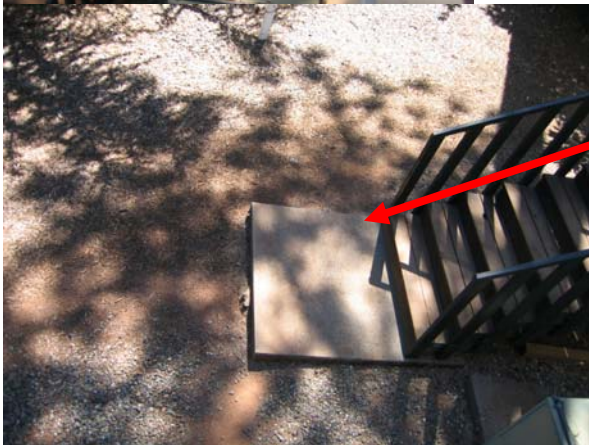
Tel:

After discussion with client, the following Feng Shui solutions are recommended:
(All solutions must be activated with Three Part Activation procedure. See addendum).



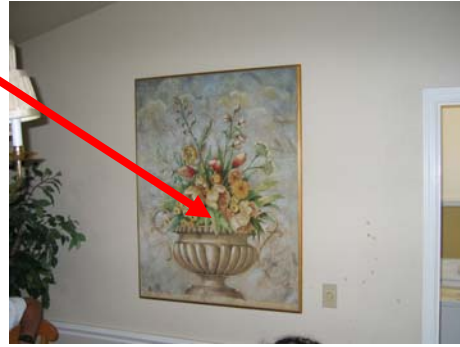
Missing Marriage corner.
Complete corner with vibrant
plant. If bloom is red, pink or
yellow would enhance
relationships.

Clean up area and remove clutter,
debris, etc.



Place plant in this general location.

Replace painting with large mirror to reflect qi (life-force) into house and not down drains of adjoining bathroom.



As discussed, if it fits in with remodeling plans, remove upper cabinets to expand feeling in kitchen.



Place range top in island if it can be done within budget.



Place art object on wall at bottom of stairs.
Put brighter light in fixture at bottom and/or install motion sensor.

Create water feature (pond, fountain, hot tub) in this area to enhance wealth and abundance.



Clear clutter and re-position desk/s to open up the space and put you in a good feng shui position without back to door.



ADDENDUM 1:

THREE PART ACTIVATION PROCESS

Activates the above solutions for maximum effectiveness. When applying any Feng Shui cure or remedy in place, make sure to perform the Three Part Activation. Use as blessing for EACH CURE.

1. **SPEECH:** Begin with a prayer or affirmation from your spiritual background. Repeat nine times.
2. **BODY:** Use a ritual hand gesture or “mudra”.
 - a. Example:
 1. Hands in Prayer.
3. **MIND:** Visualization and mystic intent.

FOR MAXIMUM RESULTS:

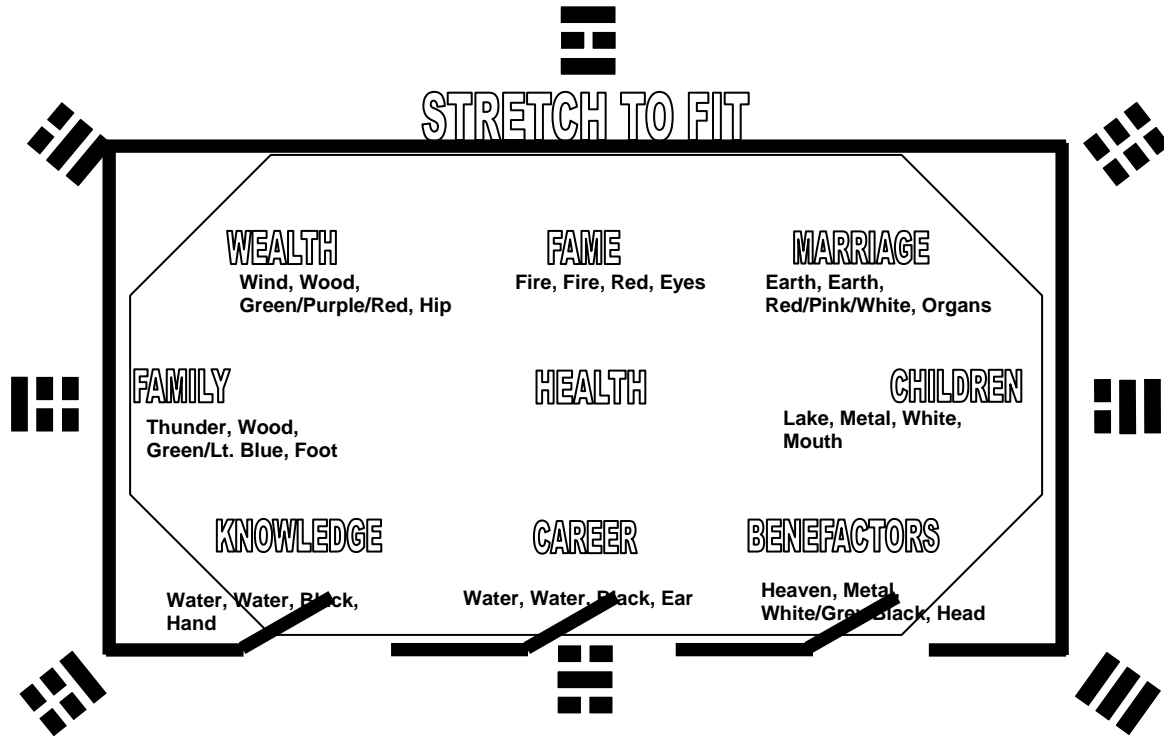
1. **Do all solutions ASAP, exactly or better than recommended and keep them to yourself (private).**
2. **Activate them with the Three Part Activation Process.**
3. **Call Helen or James at FSDI 530-470-9215 immediately if you need help or clarification.**

Source: Professor Lin Yun /BTB Feng Shui Master.

Copyright 2004 Helen and James Jay – FSDI – PO Box 399 Nevada City, CA 95959 800-551-2482

ADDENDUM 2:

BA GUA ALIGNMENT



HOW TO USE THE BA-GUA:

1. Align the Ba-Gua with the wall containing the actual front door of the building or the most important entry to a room, even if a side or back door is used more often.
2. Projections equal to or extending past the midline can create missing areas. If less than half the total width of the building, a projection creates an enhancement. In borderline cases, check the house history or even use a tape measure.

If a building's shape has many angles or is extremely complex, you may simply apply the Ba-Gua to each individual room.

Thank you,

Helen and James Jay